

T2 Pad

Smart
Commercial Pad

One PAD
Business Redefined.



One PAD for diverse applications.

Built for retail, restaurant, service industries and more.



Impressive Performance

High Performance

Qato-core 2.0Ghz
Large Memory Up to 6+128GB



Stable Connection

2.4G/5G Dual-Band Wi-fi
Bluetooth 5.1, Support Ble



NFC

Non-contact wireless communication
technology
Softpos Supported



Multi-Function Base

Multiple ports integrated for functionality expansion.

Integrated Connectivity Hub

Built-in 4-port USB hub to connect
printers, scanners, and peripherals
instantly.

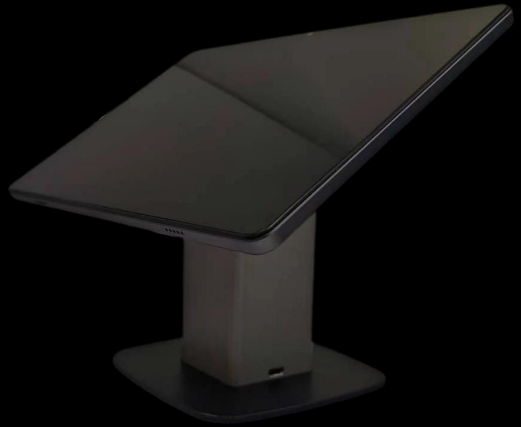
Industrial-Grade Stability

Heavy-duty weighted metal base ensures
zero-wobble during high-frequency touch
use.

Full-Tilt Ergonomics

Precision 90° tilt hinge with hidden cable
routing for a clean, professional
countertop.





T2 Pad Tech Specs

CPU

Octa-core 2.0Ghz

OS

Android 12/13

Memory

4GB RAM + 32GB ROM
6GB RAM + 128GB ROM
Extended TF Card Slot
Up to 512GB

Display

11" , 800*1280 Pixels,
LCD/IPS
Multi-Touch Capacitive
Touch Screen

Wi-fi

5GHz/2.4GHz
IEEE 802.11 b/g/n/ac

Bluetooth

Bluetooth 5.1
Support BLE

Cellular

Supported (Optional)

NFC

Supported (Optional)

Battery

Supported (Optional)

Interface

2*Type-C

Buttons

1*Power button
2*Volume button

Audio

2*Speaker
1*Microphone

Cameras

2MP Front Camera
Rear Camera (Optional)

Positioning

GPS/ Glonass/ Beidou/
Galileo

Card Slots

1*TF Card Slot

Sensors

Gravity sensor

Adapter

Input: 100~240V
Output: 5V 2A

GMS

Supported (Optional)

Dimensions(L*W*H)

239mm*157.2mm*7.8mm

Net Weight

450g

Environment

Operating Temperature: -10°C to 50°C
Storage Temperature: -20°C to 60°C
Operating Humidity: 5% to 95% non-condensing

Accessories (Optional)

Desktop Stand: With magnetic attachment, rotatable

Multi-Function Base: 4*USB expansion ports + 1*Type-C power port + 1*Type-C cable.