

T4 pro

Smart
Commercial Pad

One PAD
Business Redefined.



One PAD for diverse applications.

Built for retail, restaurant, service industries and more.



Impressive Performance

High Performance

Qato-core 2.0Ghz

Large Memory Up to 6+128GB



Stable Connection

2.4G/5G Dual-Band Wi-fi

Bluetooth 5.1, Support Ble



NFC

Non-contact wireless communication technology

Softpos Supported



Multi-Function Base

Multiple ports integrated for functionality expansion.

Integrated Connectivity Hub

Built-in 4-port USB hub to connect printers, scanners, and peripherals instantly.

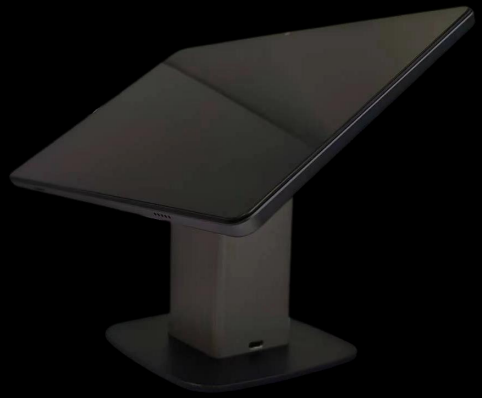
Industrial-Grade Stability

Heavy-duty weighted metal base ensures zero-wobble during high-frequency touch use.

Full-Tilt Ergonomics

Precision 90° tilt hinge with hidden cable routing for a clean, professional countertop.





T4 pro Pad Tech Specs

CPU

Octa-core 2.0Ghz

OS

Android 16

Memory

4GB RAM + 64GB ROM
6GB RAM + 128GB ROM
Extended TF Card Slot
Up to 512GB

Display

11" , 1920*1280 Pixels,
Multi-Touch Capacitive
Touch Screen

Wi-fi

5GHz/2.4GHz
IEEE 802.11 b/g/n/ac

Bluetooth

Bluetooth 5.1
Support BLE

Cellular

Supported (Optional)

NFC

Supported (under screen)

Battery

8000 mAh

Interface

2*Type-C
Pogo pin

Buttons

1*Power button
2*Volume button

Audio

4*Speaker
1*Microphone

Cameras

5MP Front Camera
13MP Rear Camera

Positioning

GPS/ Glonass/ Beidou/
Galileo

Card Slots

1*TF Card Slot

Sensors

Gravity sensor

Adapter

Input: 100~240V
Output: 5V 3A

GMS

Supported (Optional)

Dimensions(L*W*H)

239mm*157.2mm*7.8mm

Net Weight

450g

Environment

Operating Temperature: -10°C to 50°C
Storage Temperature: -20°C to 60°C
Operating Humidity: 5% to 95% non-condensing

Accessories (Optional)

Desktop Stand: With magnetic attachment, rotatable

Multi-Function Base: 4*USB

